

# Captain's Cottage

## at Mitchell College



Perfectly Located – Minutes from Mystic, Downtown New London, Foxwoods, Mohegan Sun, Ocean Beach Park, Restaurants, Museums and More!



Stay in one of the most unique spaces you'll ever find. A modern studio-style home decorated to highlight the sailing tall ships of southern Connecticut fame. Awesome tiny living tricks and access to Mitchell College's member-only beach. Sleeps up to 5 adults.

### *Your Escape*

---

Enjoy views of the Thames River from an amazing front porch. Queen bed, queen sleeper sofa and twin sleeper love seat. Smart TVs, propane grill, and game room with foosball table.

# Features & Amenities

## BATHROOM

- Hair dryer
- Cleaning products
- Hot water

## BEDROOM

- 1 Queen, 1 Sofa Bed, & 1 Twin Love Seat Sofa Bed
- Essentials
- Towels, Bed Sheets, Soap, & Toilet Tissue
- Linens
- Extra Pillows & Blankets
- Clothing Storage

## LAUNDRY

- Free Washer & Dryer – In Unit
- Hangers
- Iron
- Drying Rack for Clothing

## ENTERTAINMENT

- Smart TVs, Amazon Prime Video, Disney+, HBO Max, Hulu, Netflix, Roku

## FAMILY

- Board games

## GAME ROOM

- Bar, Foosball Table, Dart Board, Assorted Outdoor Games

## HEATING & COOLING

- Ceiling fan
- Heating

## HOME SAFETY

- Smoke Alarm
- Carbon Monoxide Alarm
- Fire Extinguisher
- First Aid Kit

## INTERNET & OFFICE

- Wifi
- Dedicated Workspace Located in a Common Space
- Desk & Chair

## KITCHEN & DINING

- Dining Table & 2 Benches
- Refrigerator/Freezer
- Microwave
- Cooking Basics: Oil, Salt, Pepper, etc.
- Pots & Pans
- Dishes & Silverware
- Bowls, Plates, Cups, etc.
- Dishwasher
- Stove/Oven
- Hot Water Kettle
- Keurig Coffee Maker
- Wine Glasses
- Toaster
- Baking Sheet
- Barbecue Utensils
- Coffee

## LOCATION FEATURES & NOTES

- Private Beach Access

## OUTDOOR

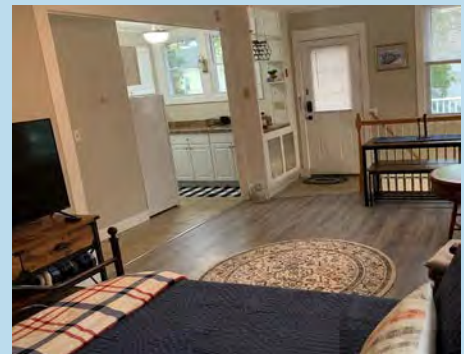
- Front Porch
- Fire Pit
- Adirondack Chairs
- BBQ Grill
- Beach Essentials
- Beach Towels & Beach Blanket

## PARKING

- Free Parking on Premises

## SERVICES

- Self-check-in
- Digital Keypad for Entry



## FOR MORE INFORMATION:

Contact | [Keith Padin](#) Email | [rentals@mitchell.edu](mailto:rentals@mitchell.edu)



*The profits from each rental home go directly towards supporting our students and Mitchell College's mission of celebrating and developing the power of unique minds.*